

## PE/Cy5 Anti-Mouse CD80 (B7-1) Monoclonal Antibody



天津三箭生物技术股份有限公司  
Tianjin Sungene Biotech Co., Ltd.  
精准 高效 稳定 Precision Efficient Stable

Catalog Number	Vial Size
M10801-35A	25 µg
M10801-35C	100 µg

**Market** | 400-621-0003  
marketing@sungenebiotech.com

**Support** | 022-66211636-8024  
techsupport@sungenebiotech.com

**Web** | www.sungenebiotech.com

**Important Note:** Centrifuge before opening to ensure complete recovery of vial contents.  
This product is guaranteed up to one year from purchase.

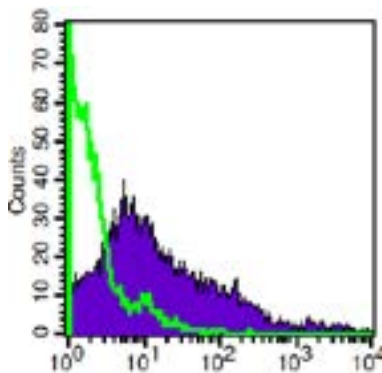
## Purified Antibody Characterization

Clone	Isotype	Reactivity
16-10A1	Hamster IgG	Mouse

## Description

CD80 is a 60 kD highly glycosylated protein. It is a member of the Ig superfamily and is also known as B7-1, B7, and Ly-53. CD80 is constitutively expressed on dendritic cells and monocytes/macrophages, and inducibly expressed on activated B and T cells. The ligation of CD28 on T cells with CD80 and CD86 (B7-2) on antigen presenting cells (such as dendritic cells, macrophages, and B cells) elicits co-stimulation of T cells resulting in enhanced cell activation, proliferation, and cytokine production. CD80 appears to be expressed later in the immune response than CD86. CD80 can also bind to CD152, also known as CTLA-4, to deliver an inhibitory signal to T cells.

## Illustration of Immunofluorescent Staining



Log Fluorescence Intensity

LPS (3-day) stimulated C57BL/6 mouse  
splenocytes stained with PE/Cy5 anti-mouse CD80

## Product Information

**Conjugation:** PE/Cy5

**Formulation:** PBS pH 7.2, 0.09% NaN<sub>3</sub>,  
0.2% BSA

**Concentration:** 0.2 mg/ml

**Storage:** Keep as concentrated solution.  
Store at 4°C and protected from prolonged  
exposure to light. **Do not freeze.**

**Application:** Recommended Application: FC

**Usage:** Each lot of this antibody is quality  
control tested by immunofluorescent staining  
with flow cytometric analysis (The amount of  
the reagent is suggested to be used  $\leq 1.0$   
 $\mu\text{g} / 10^6$  cells in 100  $\mu\text{l}$ ). Since applications  
vary, the appropriate dilutions must be  
determined for individual use.

## References

- [1] Barclay AN, et al. 1997. The Leukocyte Antigen FactsBook Academic Press.
- [2] Linsley PS, et al. 1991. J. Exp. Med. 174:561.
- [3] Salomon B, et al. 2001. Annu. Rev. Immunol. 19:225.

**For Research Use Only.**